



EVERCEM
Concrete Inside Solutions



Concrete
protection
forever





Strong inside, resistant outside

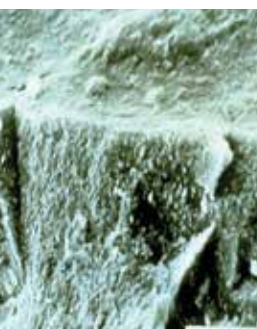


Evercem DPS is here to provide a recovery action and ultimate protection for concrete. A sealant with a deep penetrating action that extends the life cycle of cement surfaces by protecting, waterproofing and hardening them once and for all.

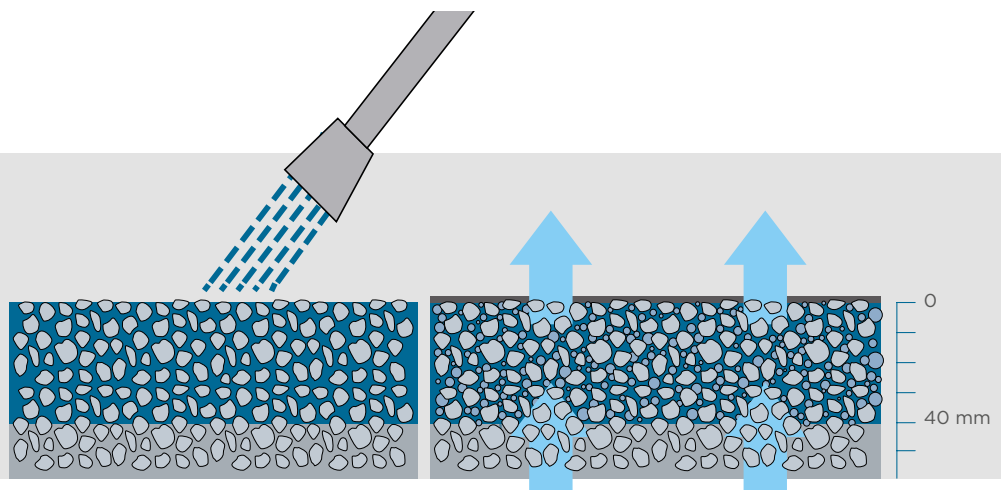
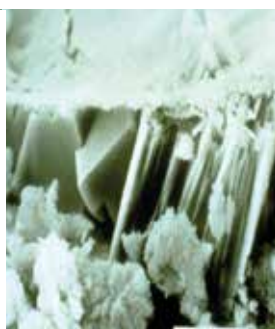


Evercem DPS can be applied on new or old concrete, either damp or dry and on all concrete surfaces, including industrial floors; by penetrating the concrete up to 40 mm, it fills the voids in the microstructure of hydrated cement and forms part of the concrete matrix, becoming an integral part of it.

Concrete treated with EVERCEM DPS



Concrete not treated with EVERCEM DPS





One product, many functions



Evercem DPS can express its full potential on concrete surface, without altering its appearance in any way.



provides a **waterproofing effect** whilst allowing breathability



provides an **anti-deterioration action**, thereby extending its life cycle



reinforces against **plastic and drying shrinkage cracking** if applied immediately on freshly placed concrete as soon as formwork is removed



reinforces and strengthens it, thereby enhancing its compressive resistance



seals surface cracks up to 0.3mm



protects reinforcement bars



reduces dirt on surfaces



prevents pollutants from penetrating



reduces concrete dusting



blocks rising damp, preventing salt efflorescences from forming and swelling on painted and resin-coated surfaces, when applied on grade slabs and foundations



protects it from external agents like rain, salt, oil and acids, UV rays, freeze/thaw cycles, carbonation, chemicals



it is also an excellent **primer** for subsequent finishing treatments

Handy, safe, eco-friendly

Ready for use and easy to apply, Evercem DPS is usually sprayed (two coats), but it can also be applied with a roller or brush. Eco-friendly, non-toxic, colourless, odourless and water-based, Evercem DPS is certified for use in tanks and surfaces in contact with drinking water and for food processing industry.



Specifically designed
for floors



Deep penetrating protection against concrete flooring deterioration. It permanently strengthens, waterproofs and preserves concrete works, and can be used on new and old industrial floors. Suitable for protection from chemicals, even aggressive ones, as well as from freeze-thaw cycles and rising damp. Prevents (when applied on freshly placed concrete) from micro-cracks due to plastic and drying shrinkage. It is a permanent anti-dusting agent and also works as a primer for any further treatment.

Evercem's chemical action starts from the inside



Unlike most other sealants, which quickly deteriorate and come off, Evercem DPS chemically reacts with the concrete matrix becoming an integral part of it. The catalyst in the product can activate those free cement parts not involved in the hydration process during packaging, casting,

setting and curing stages. This is possible thanks to the presence, in the concrete, of alkaline substances (namely calcium hydroxide - $\text{Ca}(\text{OH})_2$) which, by reacting with DPS, form hydrated silicates that fill in the empty spaces in the microstructure.

Also suitable for stone and wood

Along with Evercem DPS, specifically designed for concrete, the range also includes another two products:

- Evercem TOP SEAL for natural stone and terracotta tiles
- Evercem WOOD for wood



Clear, water-repellent and breathable coat that extends the life cycle of concrete, natural stone, floors, brickwork and wood. Protects treated surfaces from rain, salt, oil and chemicals that over the years can damage surfaces. Also protects from mould and algae. Does not alter colours or the structure of treated surfaces and leaves a clear finish.



EVERCEM WOOD extends the life cycle of wooden surfaces. Designed to permanently seal and harden wood, the product penetrates into the layers and cells of wooden products by forming a protective internal barrier. Provides protection from humidity and other agents that cause deterioration, thereby improving hardness and resistance to abrasion.





Parker Dam and approach roads, United States



Field-tested effectiveness worldwide

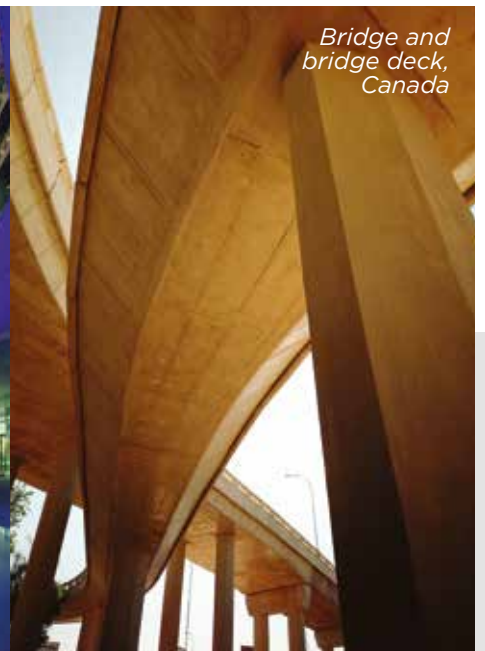
Produced and marketed by Tecnova Group, DPS has been successfully used all over the world on a number of different kinds of concrete works: bridges and motorway structures, columns, walls and parapets, concrete floors, food-processing plants, water tanks and reservoirs, parking structures, chemical factories, petrol stations forecourts and sewerage treatment plants.



West Line railway viaduct by MTR Corporation, Hong Kong



F1 circuit, Abu Dhabi



Bridge and bridge deck, Canada





Protection and durability
for concrete works



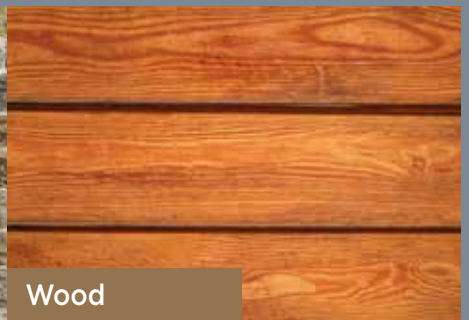
Evercem is a range of deep-penetration sealers
specifically designed for commonly-used construction materials



Concrete



Natural stone



Wood



Tecnova Group S.r.l. Via Al Idrisi, 2T • 95041 • Caltagirone (CT) • Italy • Tel. +39 0933 31224 • Fax +39 0933 25621 • www.tecnovagroup.com

